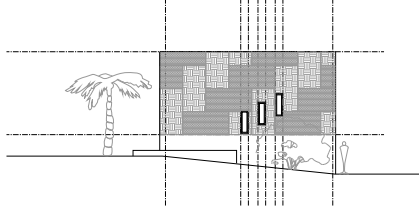
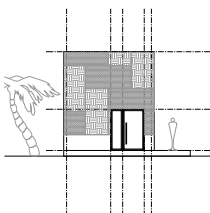
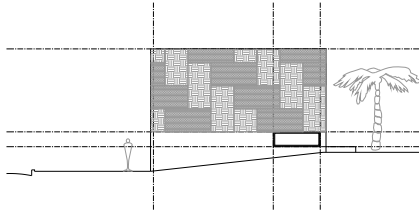
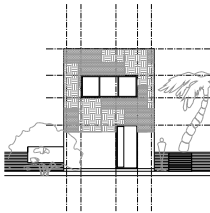
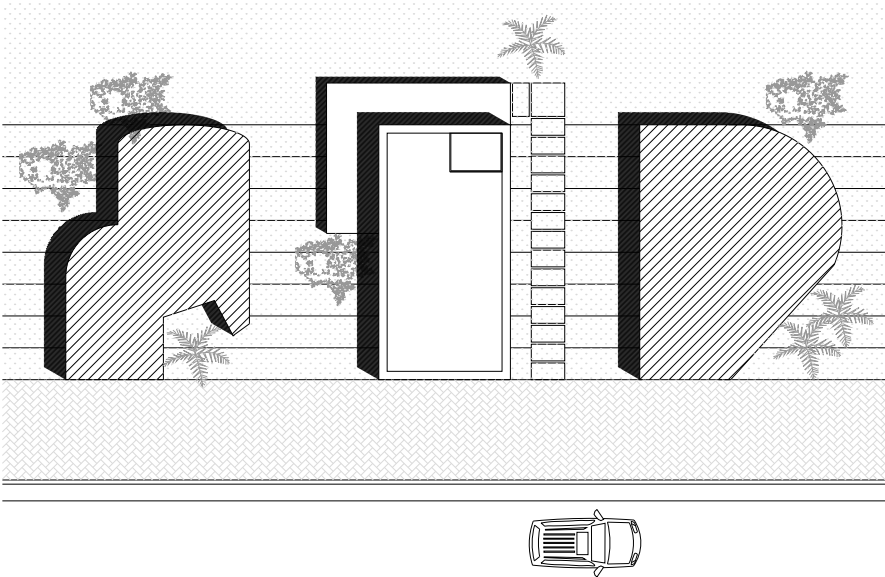
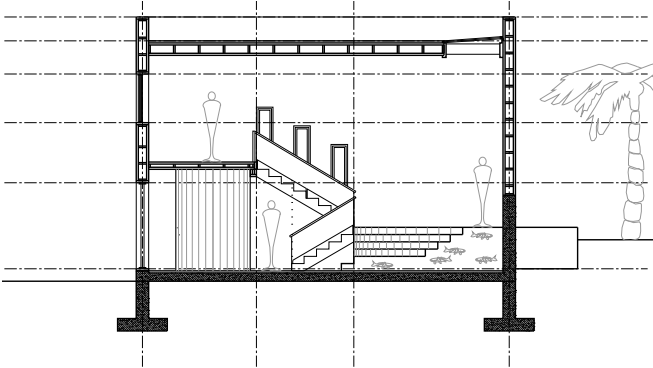
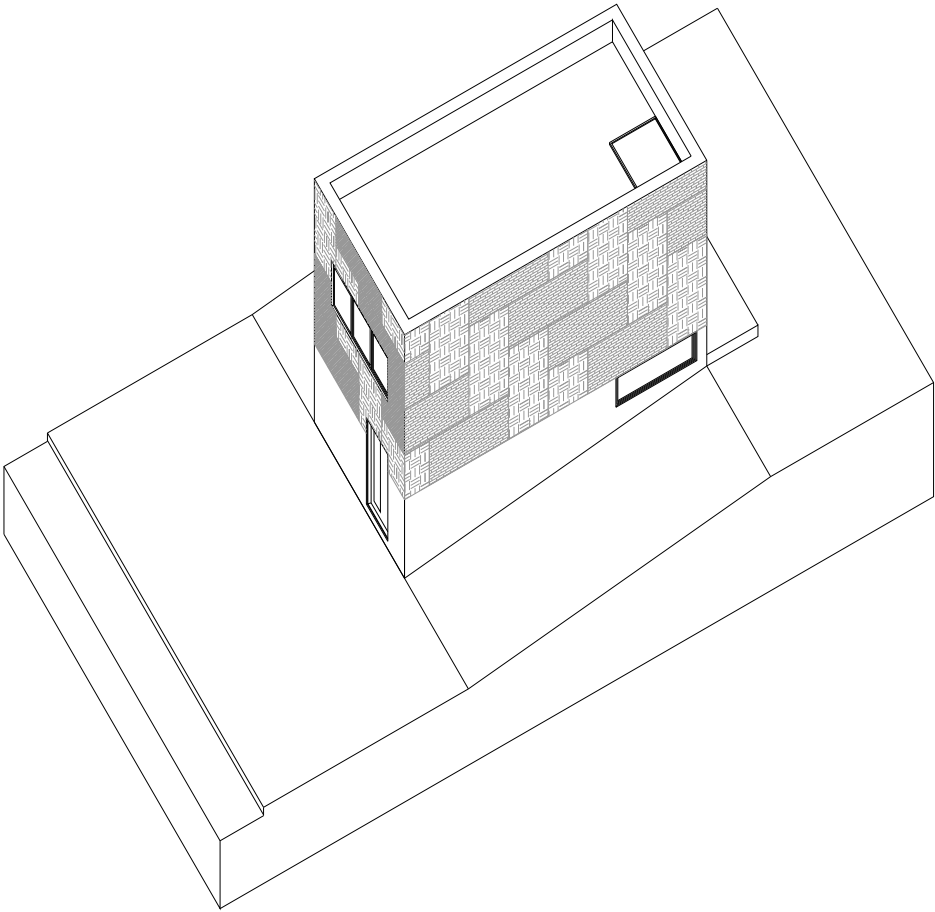
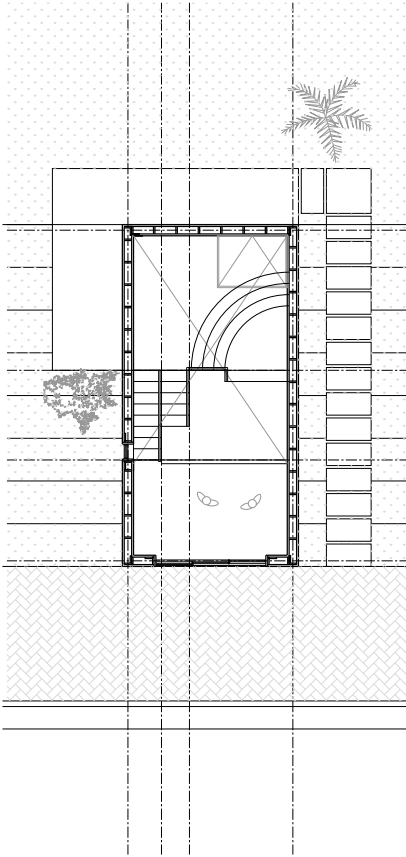
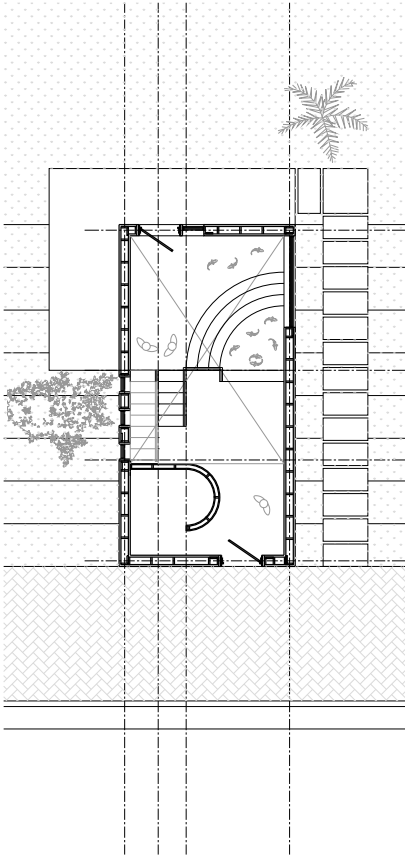
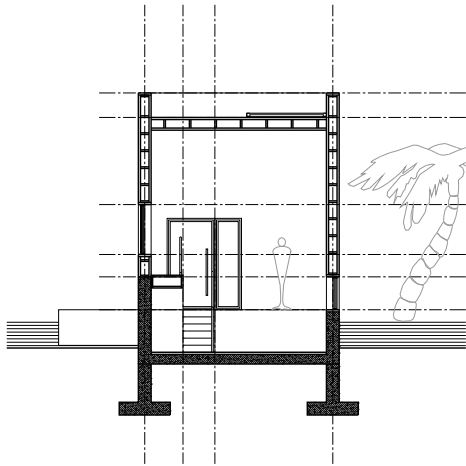


TABLE OF CONTENTS

DIGITAL MEDIA I	TECHNICAL DRAWING	P. # – #
	2D GRAPHICS	P. # – #
	FINAL PROJECT	P. # – #

TECHNICAL DRAWING

THIS PROJECT USES AUTOCAD TO DRAFT A THEORETICAL BUILDING. IT TEACHES THE BASICS OF DRAWING IN THE PROGRAM AS WELL AS THE PROPER WAYS OF EXPORTING TO OPTIMIZE FILE PERFORMANCE. CLEAR HIERARCHY OF LINE WEIGHT HELPS TO MAINTAIN CLAIRTY.

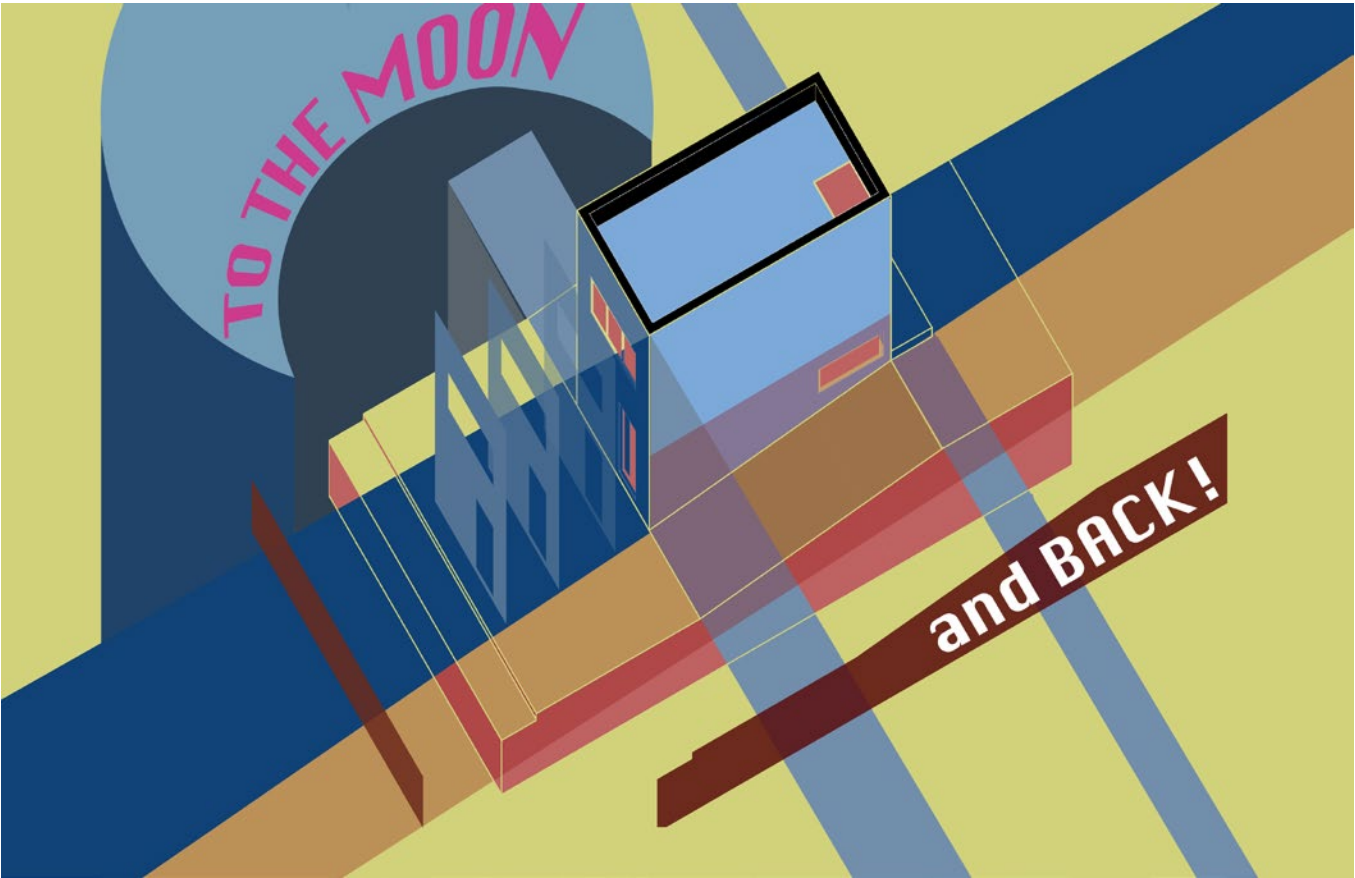
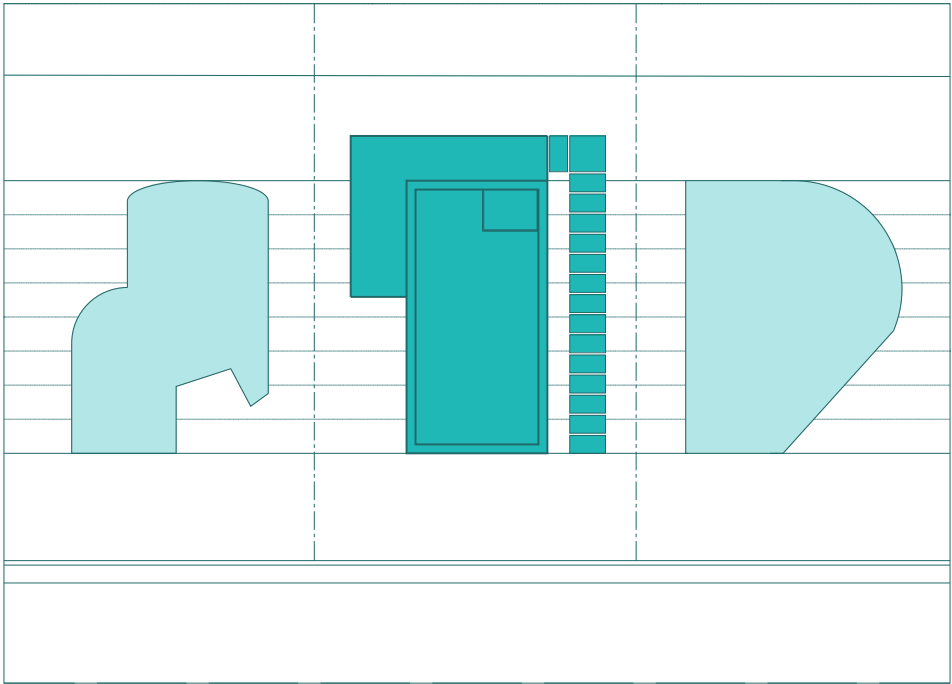
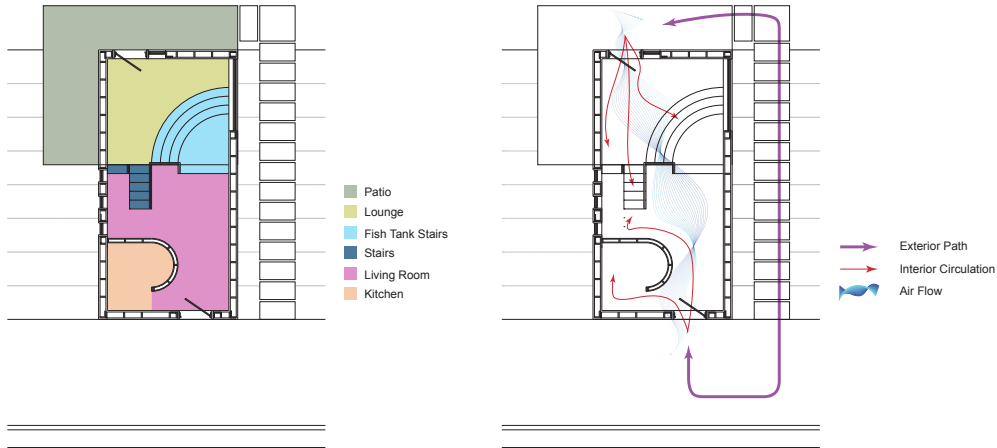


DIGITAL MEDIA I

62-122
Carnegie Mellon University SoA
Professor Eddy Man Kim

2D GRAPHICS

THIS PROJECT USES THE ADOBE SUITE (ILLUSTRATOR, PHOTOSHOP, AND INDESIGN) TO ADD FURTHER CONTEXT AND DETAILS TO THE PREVIOUS PROJECT'S AUTOCAD DRAWINGS. IT IS ABLE TO QUICKLY PRODUCE AN IMAGE THAT IS PROFESSIONAL AND CLEAR IN ORDER TO COMMUNICATE IDEAS.



DIGITAL MEDIA I

62-122
Carnegie Mellon University SoA
Professor Eddy Man Kim

FINAL PROJECT

SECTION CUTS OF THE SCOTT HALL ATRIUM. DRAFTED USING AUTOCAD WITH FINISHES DRAWN USING ILLUSTRATOR, PHOTOSHOP, AND INDESIGN. HIERARCHY OF LINE WEIGHT AND RENDERED ELEVATIONS MAINTAIN THE CLARITY OF THE SPACE.

